

UP ABOVE THE WORLD SO high



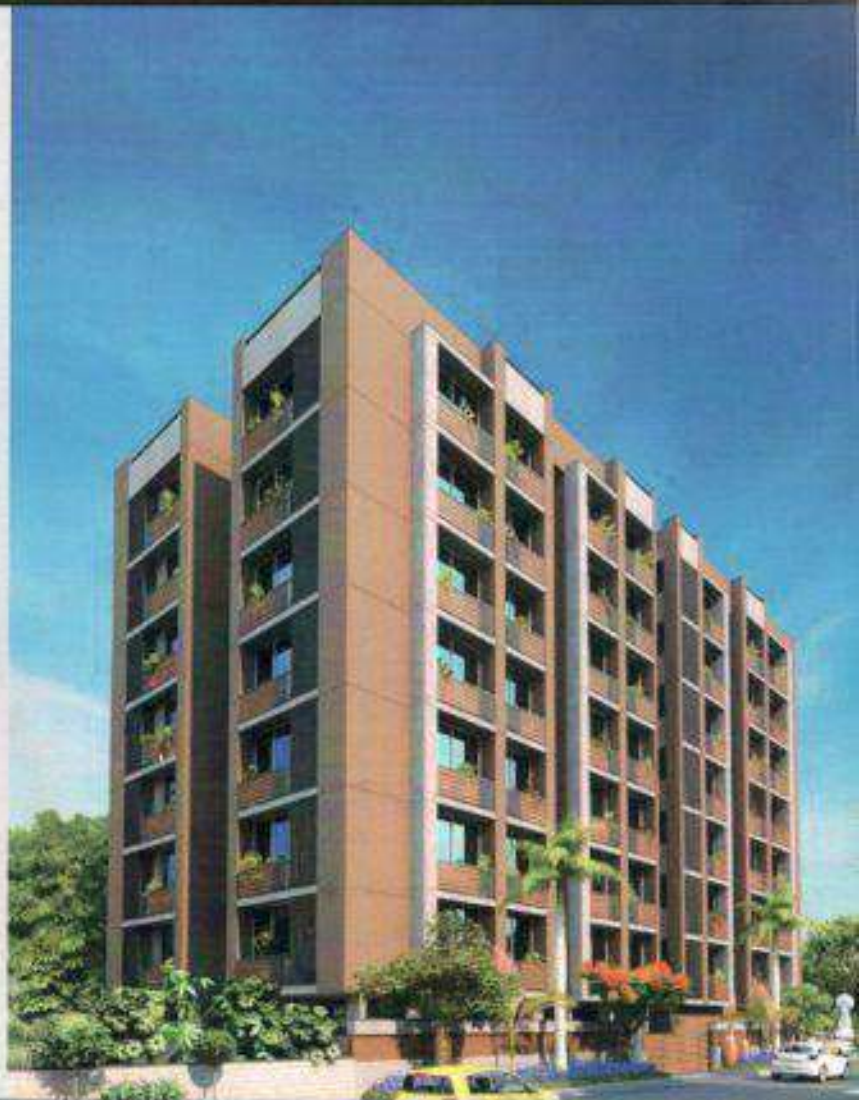


SHYAM
ENTERPRISE

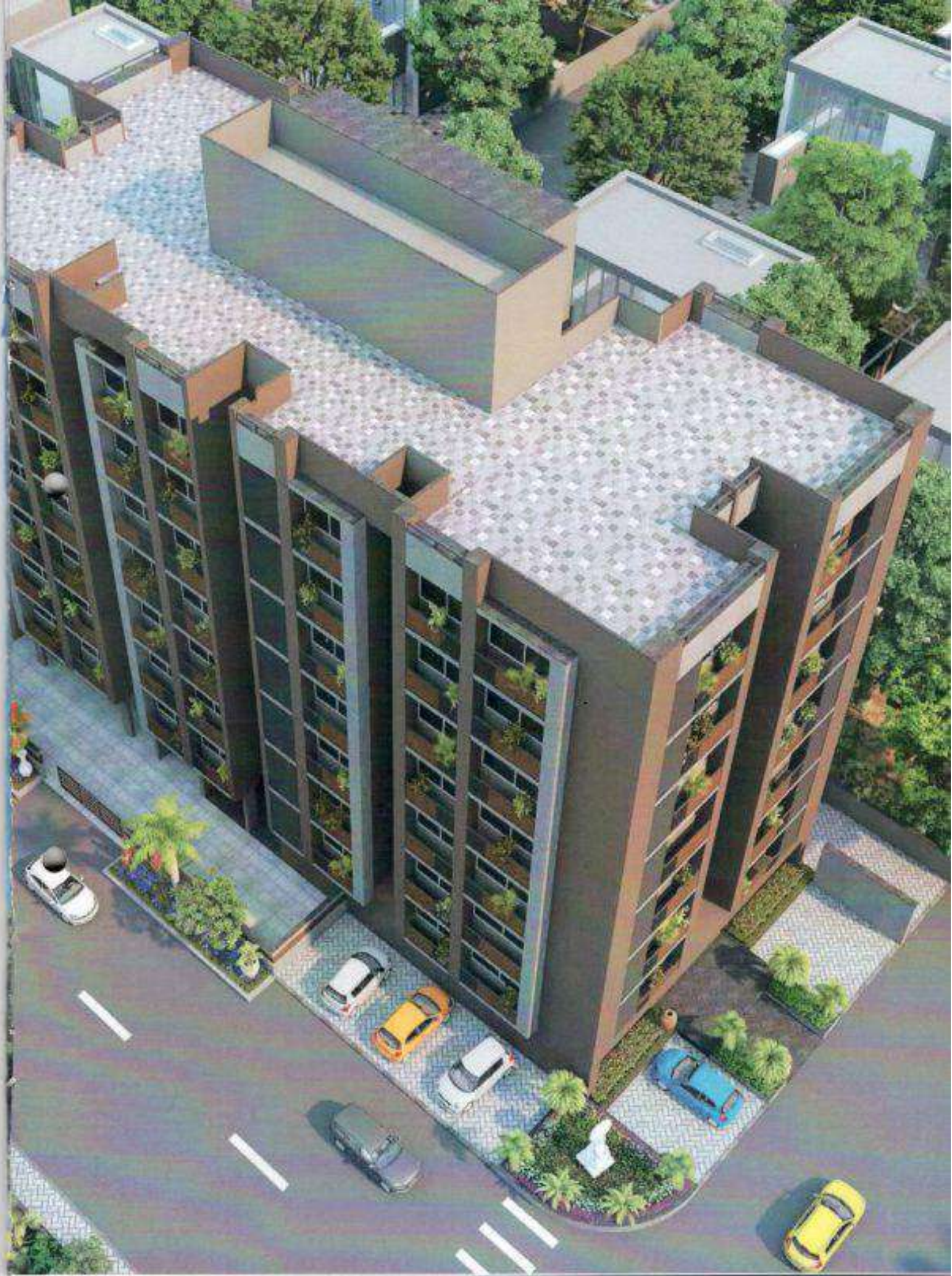
The logo consists of a stylized peacock feather on the left, with its eye-like pattern in shades of blue, green, and red. To the right of the feather, the word "SHYAM" is written in a large, blue, sans-serif font. Below "SHYAM", the word "ENTERPRISE" is written in a smaller, blue, spaced-out sans-serif font.

high LIVING.

● Shyam Elkin is a project initiated by Shyam Enterprise. Elkin means god's creation. With a concept of affordable high living, the group has launched houses that are meant for the common man who thinks & lives uncommon.

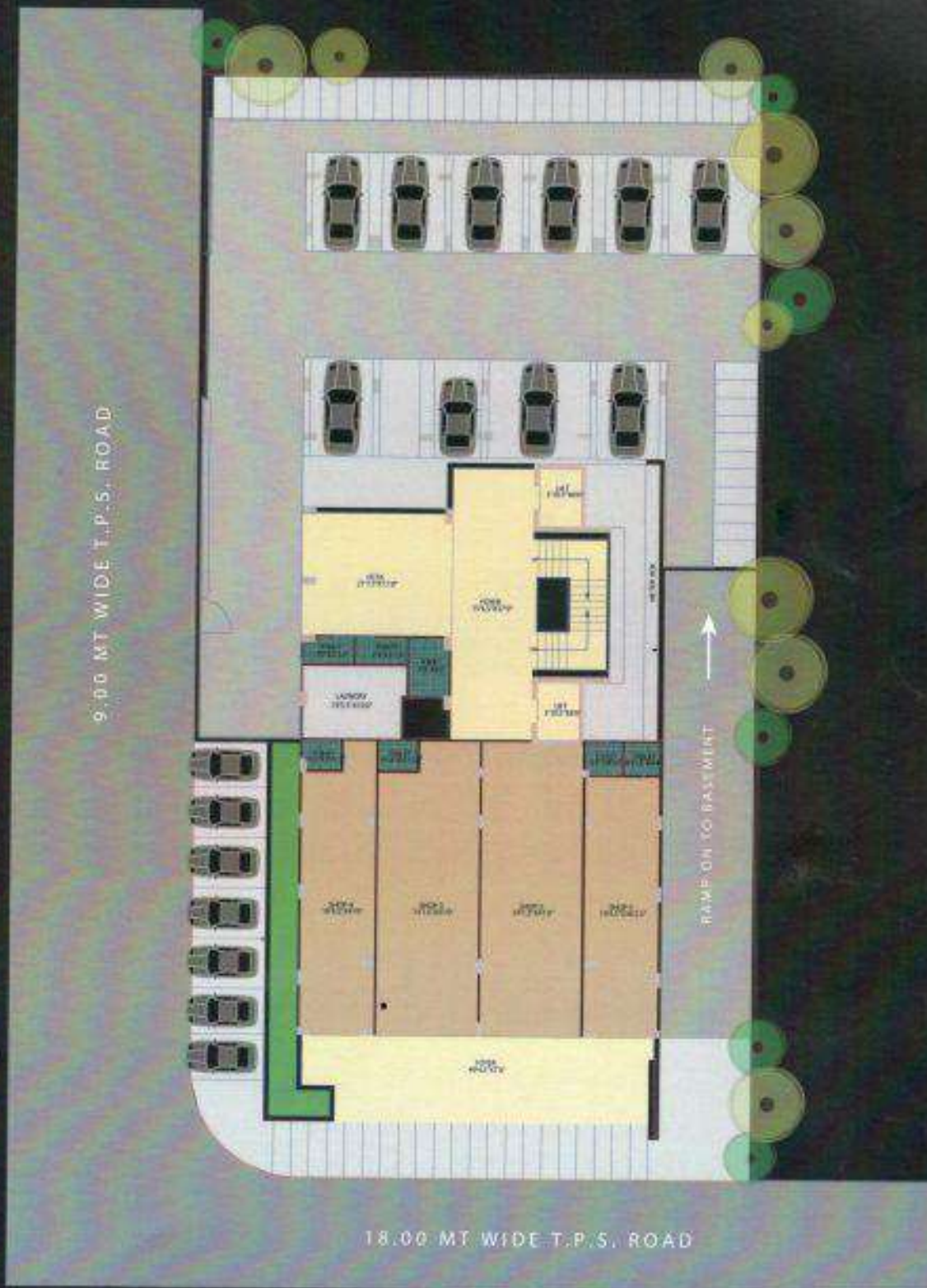








GROUND FLOOR PLAN



TYPICAL FLOOR PLAN

9.00 MT WIDE T.P.S. ROAD

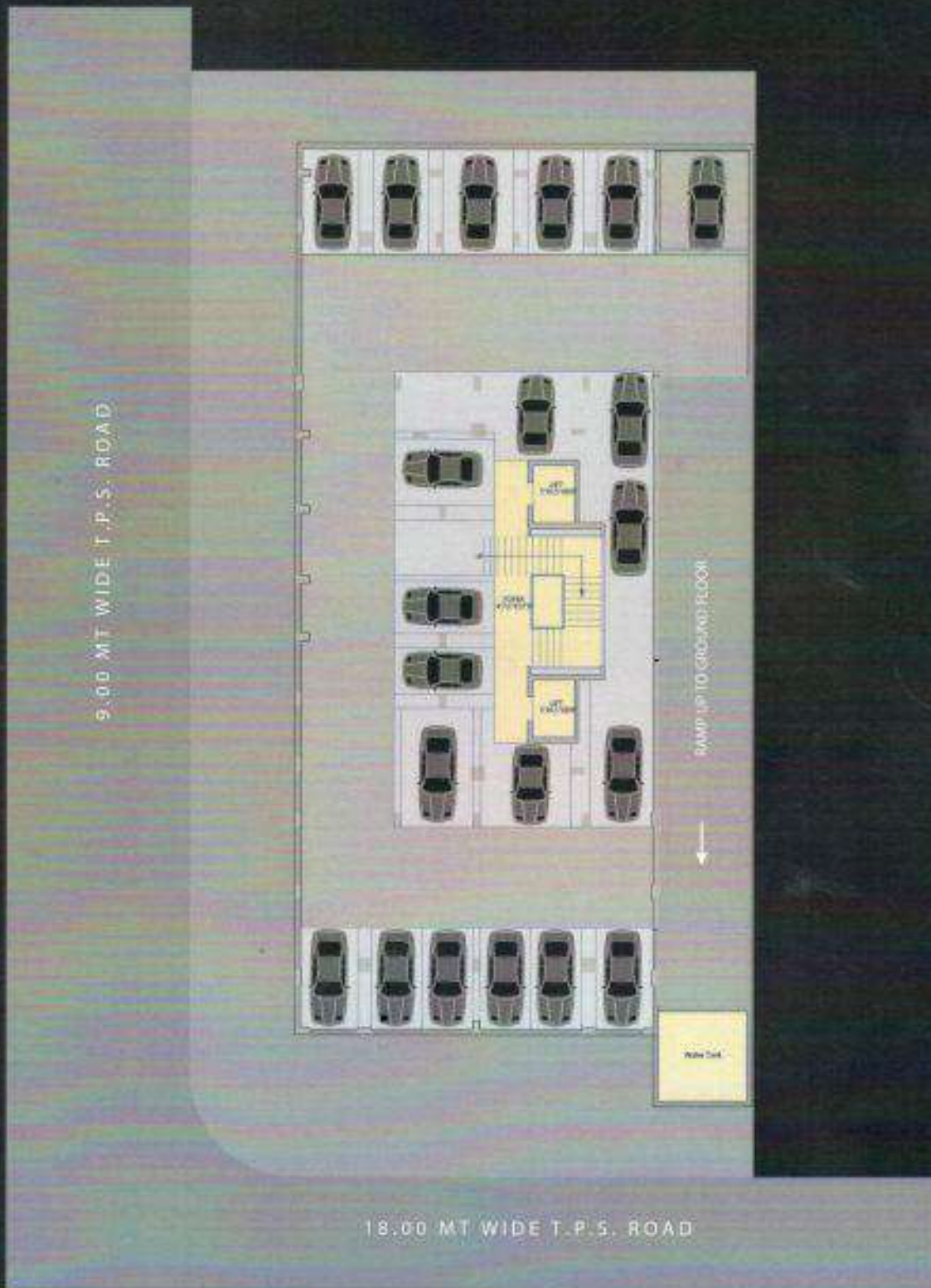


18.00 MT WIDE T.P.S. ROAD

UNIT PLANS



BASEMENT FLOOR PLAN





SOME COMBINATIONS
ARE MEANT TO BE

high PROFILE...



SPECIFICATIONS

WALL FINISHES

- | All rooms are finished by single coat mala plaster with putty finish

FLOORING

- | Premium quality Vitrified tile flooring in all other rooms
- | Wooden figure tile flooring in Master bedroom
- | Wash area floor finished by designer tile or natural stone.
- | China mosaic with required water proofing on terrace.

DOORS & WINDOWS

- | Decorative main door with wooden frame & wooden shutter with SS hardware
- | All other both side laminated water proof flush door with quality lock on Granite frame
- | Superior Quality Aluminum sliding window with granite revile.

KITCHEN

- | Granite platform with SS sink & decorative tile Dedo up to Lintel.
- | Provision for gas pipeline connection.

TOILET

- | Premium quality anti skid tile & easily maintainable & modern designer tile concept up to beam bottom level
- | CP fittings and sanitary ware of Hindware, Jaguar, Cera or equivalent brands.

ELECTRICAL

- | Concealed & fire resistant right gauge wiring of "ISI" copper wire with finlox, PR or equivalent make. Distribution board with "MCB" & "ELCB" to "ISI" make modular electrical accessories. Ample electrical points in all areas. Good quality of Earthing for whole unit. Landline phone conduit, Dish TV wiring conduit with connections. Broad band net connection conduit • Modern electronics security systems & communication system in all applicable areas. • Auto sensor water pumping systems

FEATURES THAT
LET LIFE, SOUND ON A **high** NOTE.

FEATURES

- | Safe & sound quality controlled R.C.C. frame structure with best material components earthquake resistant design as per IS CODE
- | Double coat sand face plaster / Texture on external walls. Long lasting & weather resistant acrylic paint with Water repellent chemical coating of standard make to all external walls.
- | Powder coated MS railings in all apartments & common areas. Water proofing in all toilets & terrace area to prevent seepage
- | Corrosion free and leak proof cpvc/upvc pipe & fittings. SWR drainage system for easy maintenance
- | Design for maximum cross ventilation. Exhaust fan point provision in kitchen & toilets. Clean & sufficient parking at ground level & basement level.
- | Safe and smooth modern lifts having sufficient capacity.
- | Bore & underground water storage tank to ensure 24 hours water supply
- | 24 hours security guard for our prestigious member's safety
- | AC conducts piping in all bed rooms & living rooms.
- | Anti-termite treatment shall be applied by standard materials to completed area.





LIFESTYLE THAT HOLDS YOUR HEAD high

Shyam Elkin is a seven storey high rise space, that matches all the standards you ever dreamt of. On a prime location of Ahmedabad, this is a lifestyle crafted for all those who love to live in a class. With selective 5 families at one floor, you are sure to enjoy the variety.



AMENITIES

Amenities here are just like the cherry on the cake. This adds luxury to the predefined lifestyle. With all happiness under one roof, families have all their spare time filled with fun. Facilities provided are –

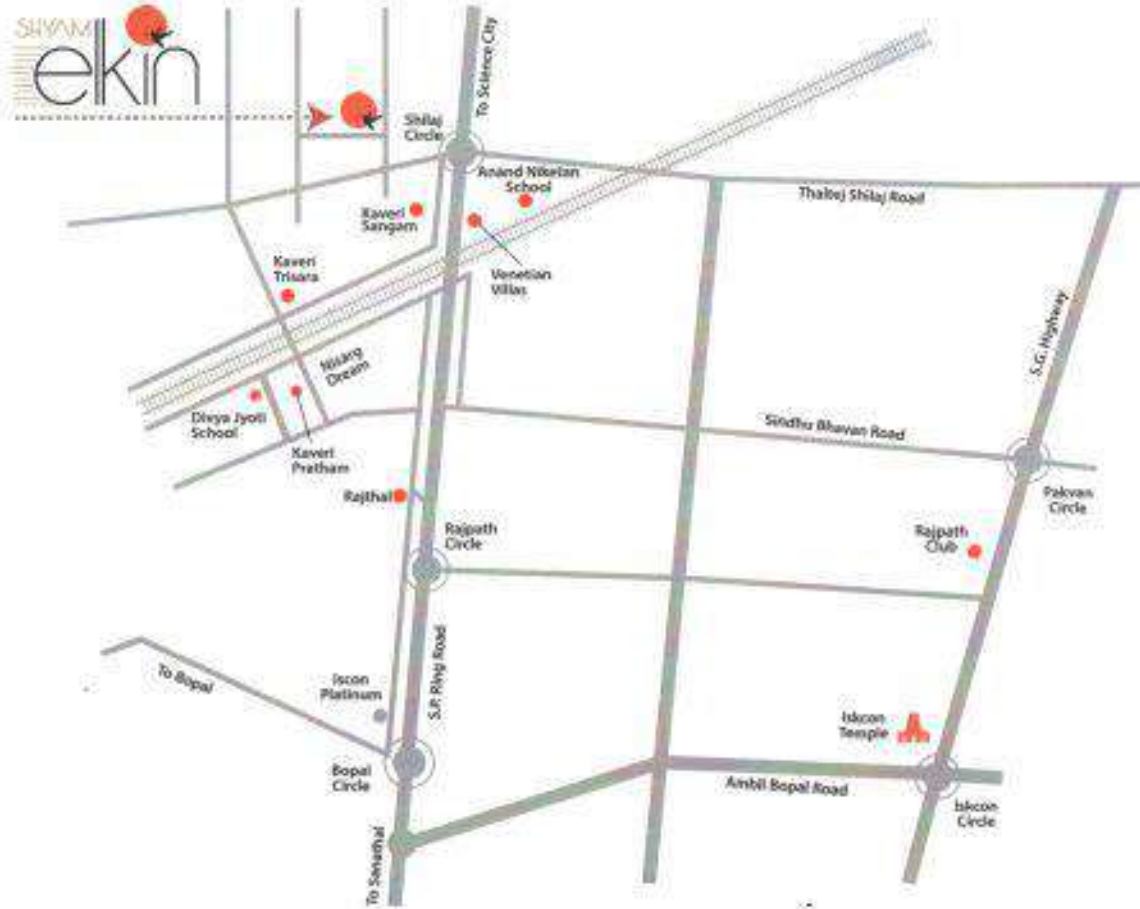
- Entrance Gate
- 24 x 7 Security
- CCTV
- Single Point IT Solution
- Entrance Foyer
- Garden Seating



SHYAM
ekin

The logo consists of the word "SHYAM" in a gold, sans-serif font above the word "ekin" in a black, stylized font. To the right of "SHYAM" is a red circle with a black bird silhouette perched on its edge. To the left of "ekin" are several horizontal gold lines of varying lengths, resembling a stylized sun or a decorative element.

KEY PLAN



47, Bari Valo Vas, Shilaj, Ahmedabad 380058. Mobile: 98250 61440, 98250 21712. Email: shyamelkin@gmail.com

DEVELOPERS



ARCHITECT

ARCHITECTONICS
98989 98656

STRUCTURE
DESIGN

SARJAN
CONSULTANTS
98250 08668

LEGAL ADVISOR

V.V. PATEL & CO.

RERA Reg. No: 0000000000

DISCLAIMER: Stamp duty, Registration charges, legal charges, G.E.B. charges etc. shall be borne by purchaser. - GST, MD, TD5 and any other taxes levied in future shall be borne by purchaser. - Any kind of internal changes are strictly not allowed. - Internal changes are subject to prior approval from developer. - All rights to alterations/modification in the design and specifications are reserved by the developer and shall be binding to all purchasers. - This brochure is for private circulation to provide general information and shall not form a part of any agreement. - All visuals, images, facilities and other details shown here are indicative and for representation and are subject to change by the developer without obligation. - Irregular payments shall cause cancellation of booking. - The details, facts, specifications, figures, mentioned in brochure are indicative for information purpose only and are subject to modifications. - Compliance required as per RERA Act, Subject to Ahmedabad Jurisdiction.